

*Säker sjöfart för människa och miljö*



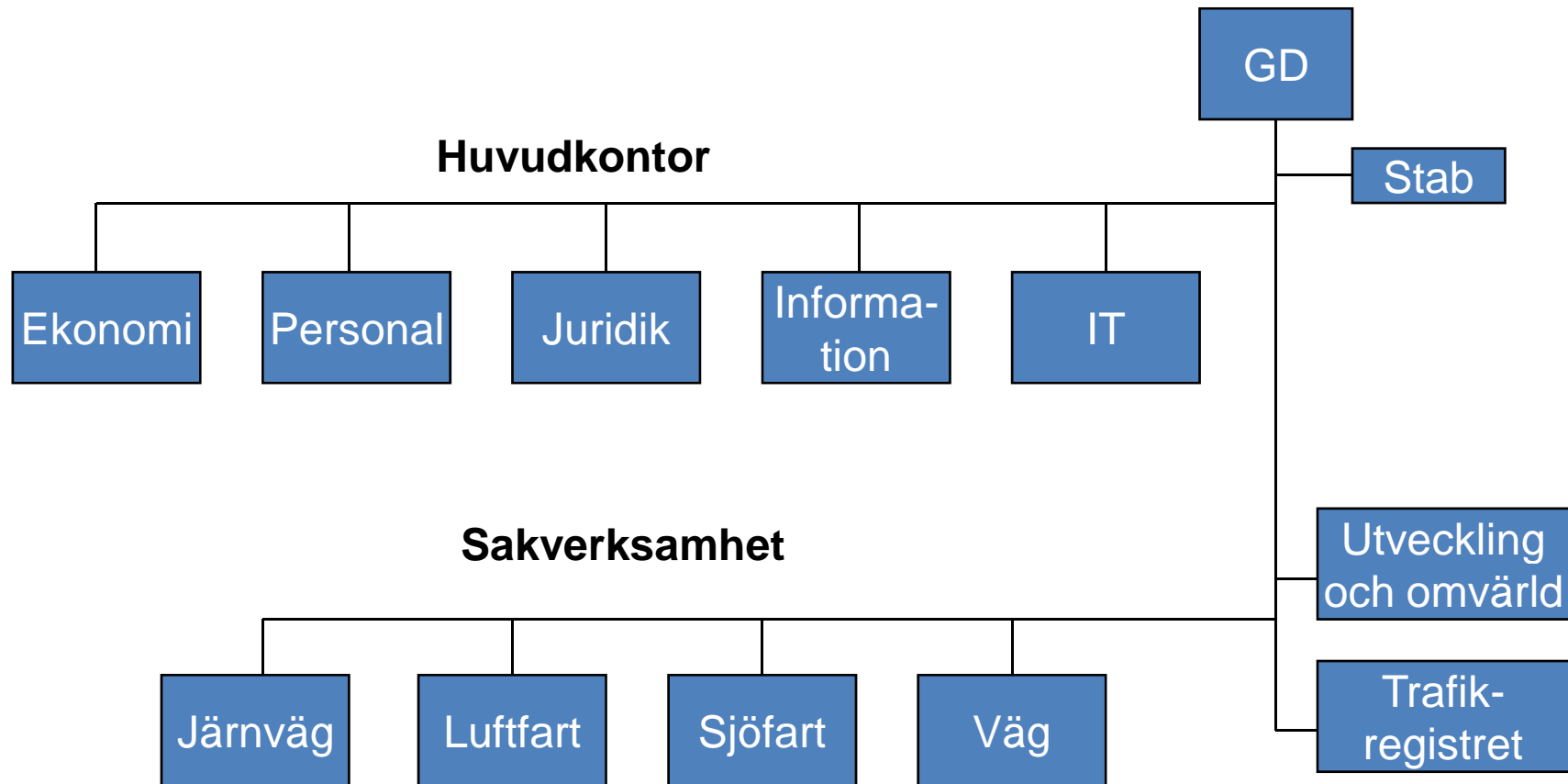
*Swedish Transport Agency*

*Maritime Investigation Unit*

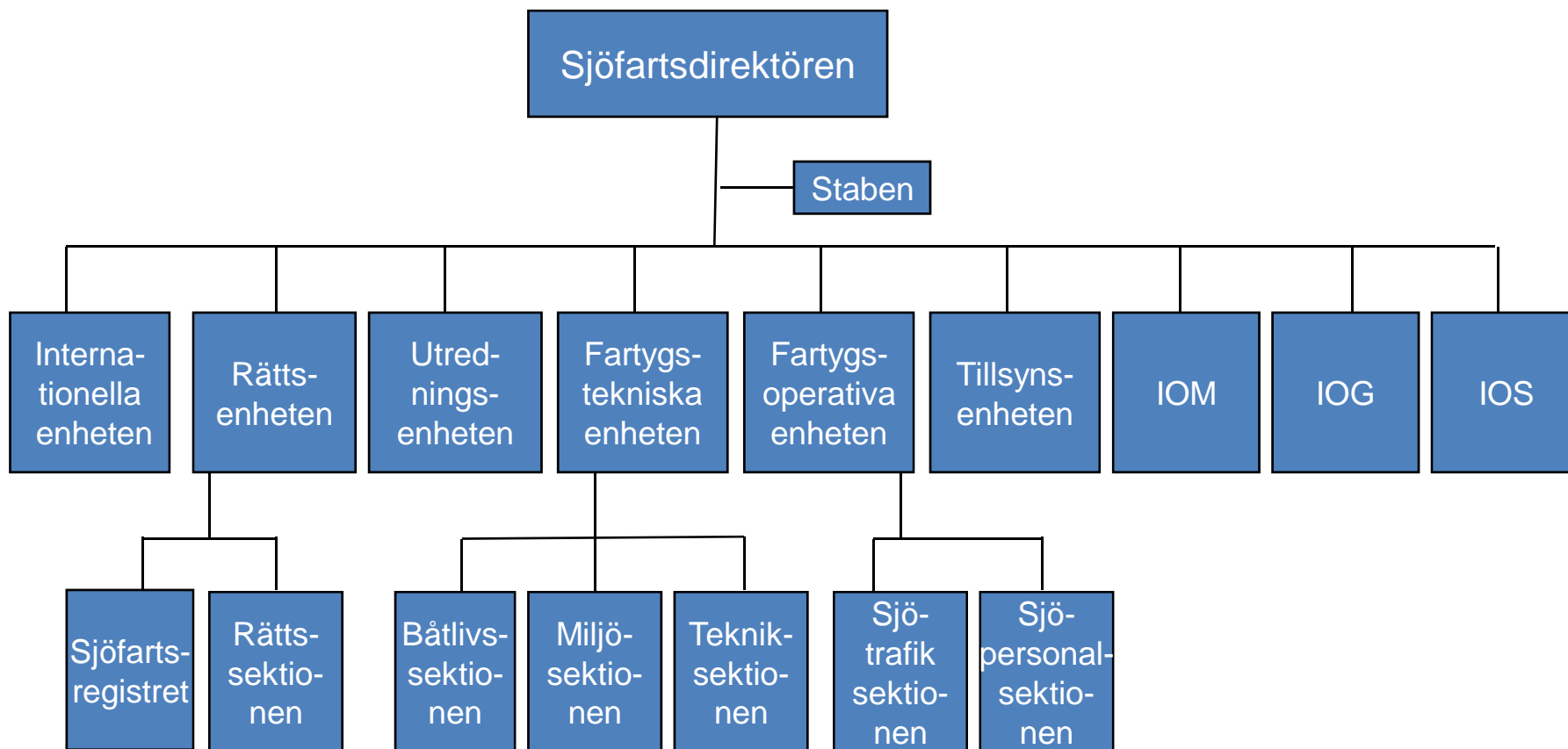
*Jörgen Zachau*



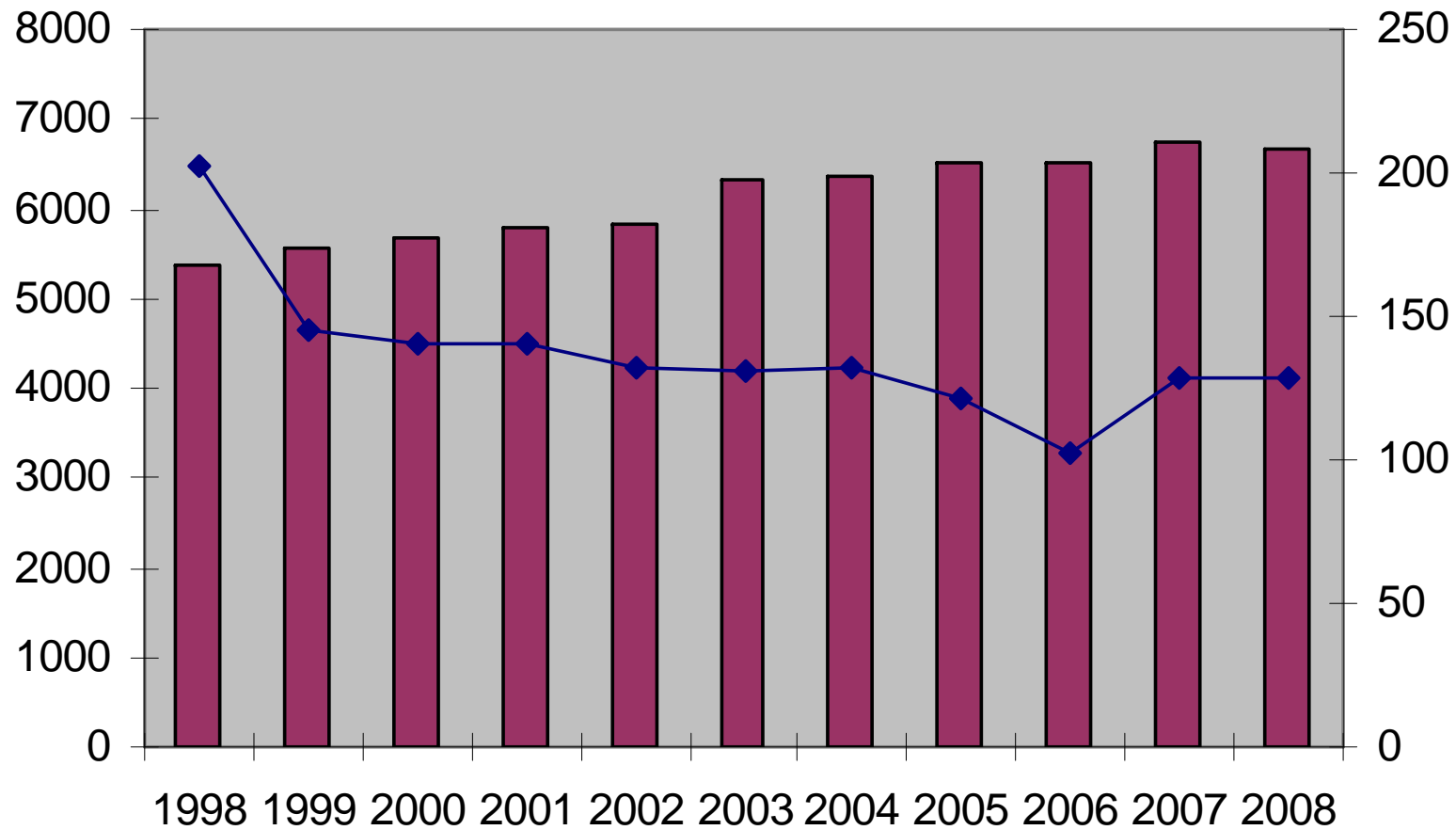
# Organisation



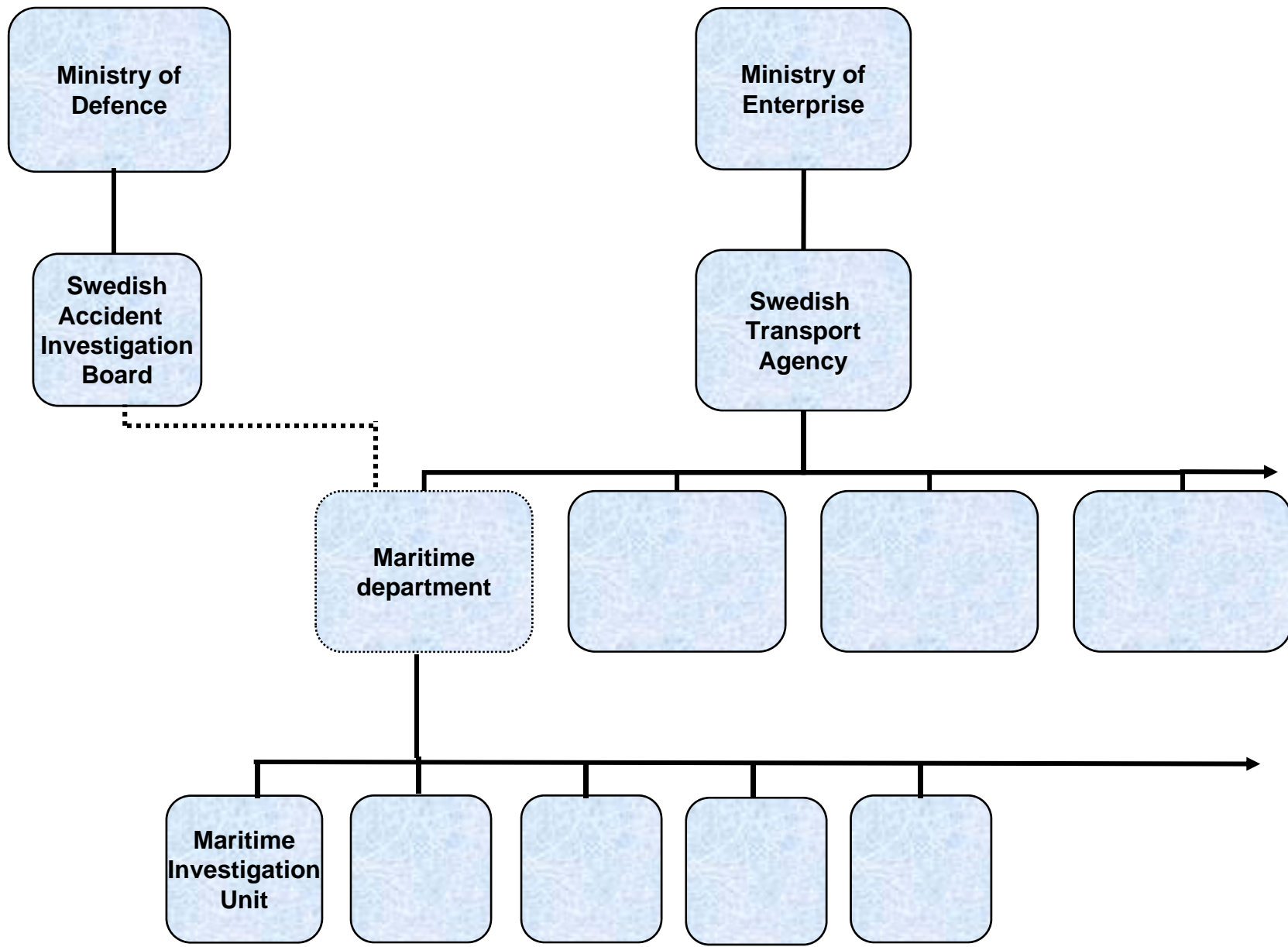
# Sjöfartsavdelningen 2009



## Accidents on Swedish ships and number of registered ships



Antal reg. fartyg — Antal olyckor/tillbud



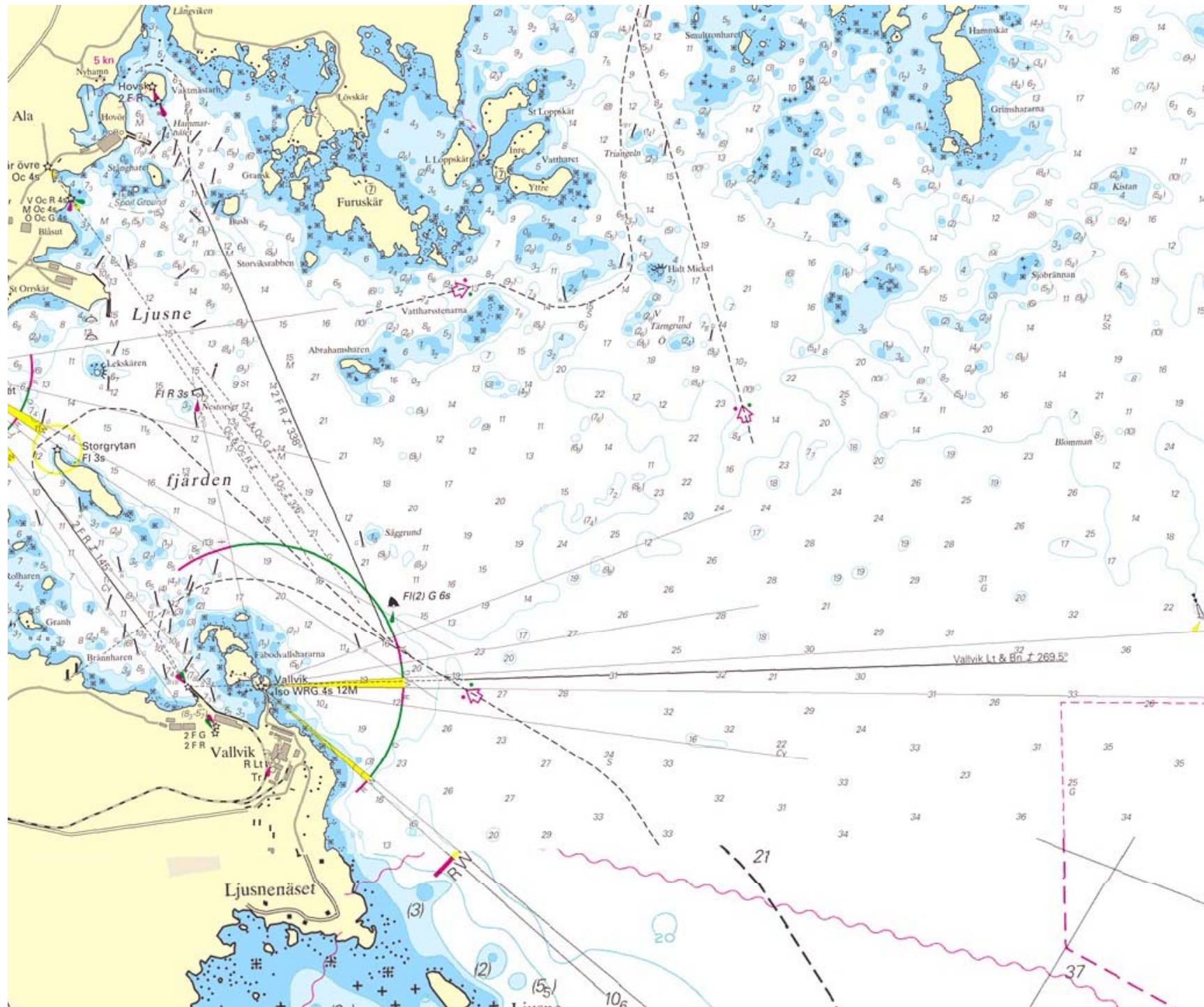


# Basic facts

- Pushing barge
- Wind NNE 10 m/s, waves 1.5 m, temp -3°C

The pilot seriously injured her left leg











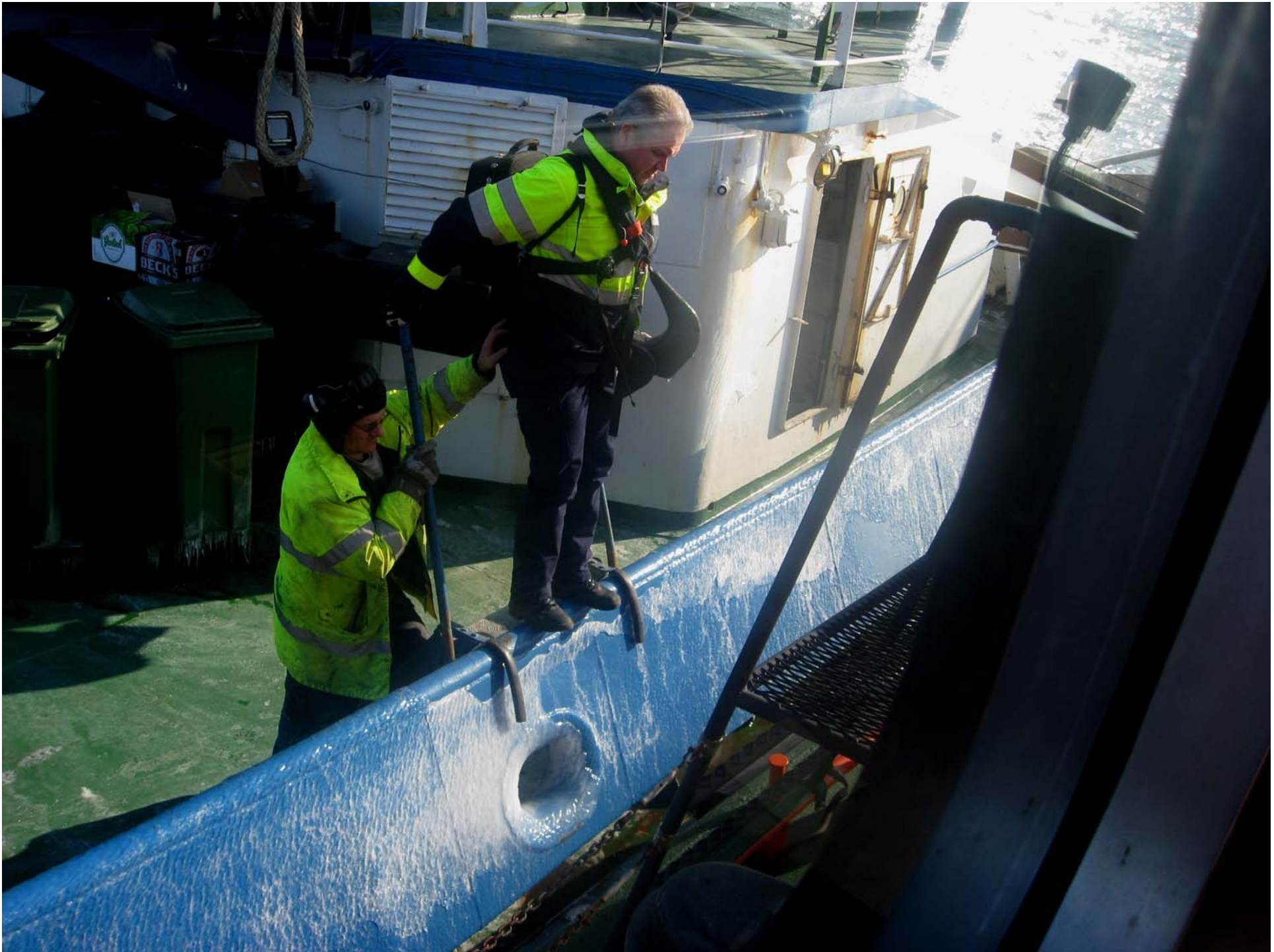














# Factors

- The under the circumstances insufficient embarkation arrangements on KARL-ERIK
- Unsatisfactory view from the PILOT 30
- The weather
- One tried to pursue the embarkation in spite of too poor conditions

# Recommendations

- Measures for improved embarkation and disembarkation on the tug
- Improved view on the pilot boats concerned
- The Inspectorate is to look over the need for changes in regulations



**Swedish Transport Agency**  
*Maritime Investigation Unit*  
*Jörgen Zachau*

