



**ONNETTOMUUSTUTKINTAKESKUS
CENTRALEN FÖR UNDERSÖKNING AV OLYCKOR
ACCIDENT INVESTIGATION BOARD FINLAND**

Sörnäisten rantatie 33 C, 00580 Helsinki, Finland
www.onnettomuustutkinta.fi

SPECIFIC FEATURES OF INLAND WATERWAYS

Martti Heikkilä

EMAIIF 5

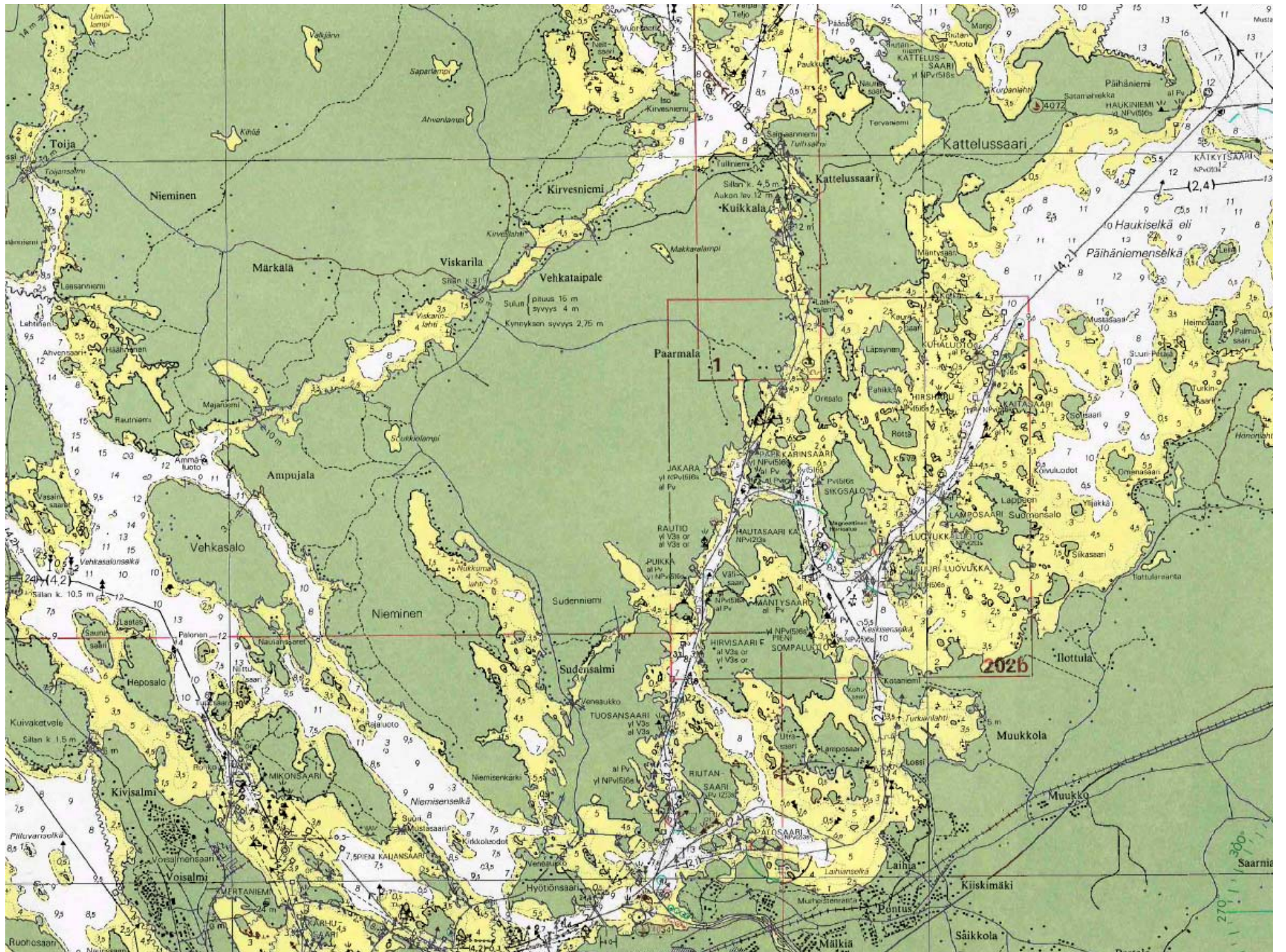
Budapest

29 - 31 March 2009



SAIMAA CANAL







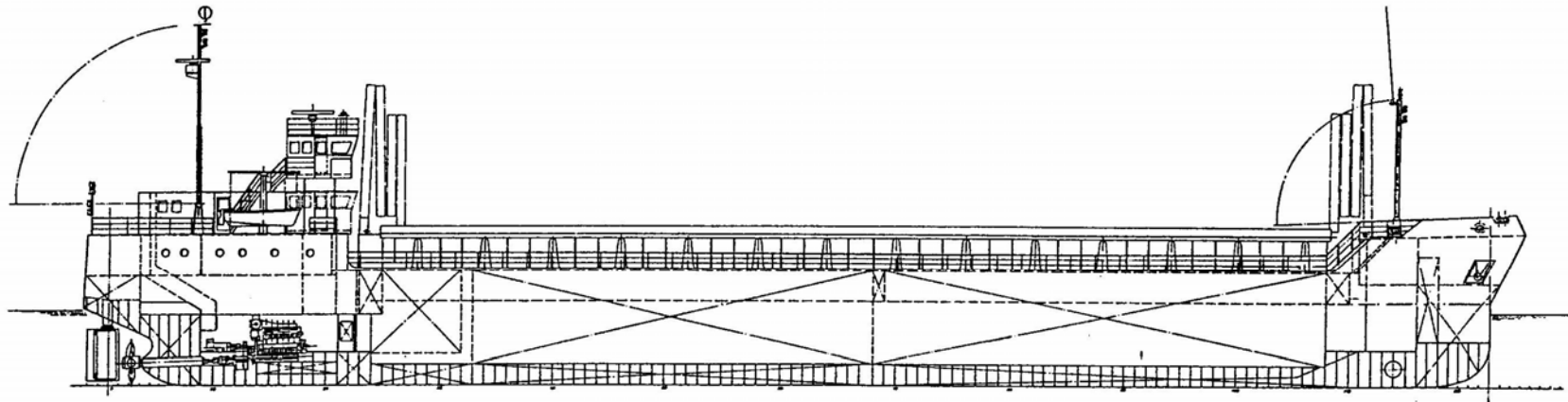
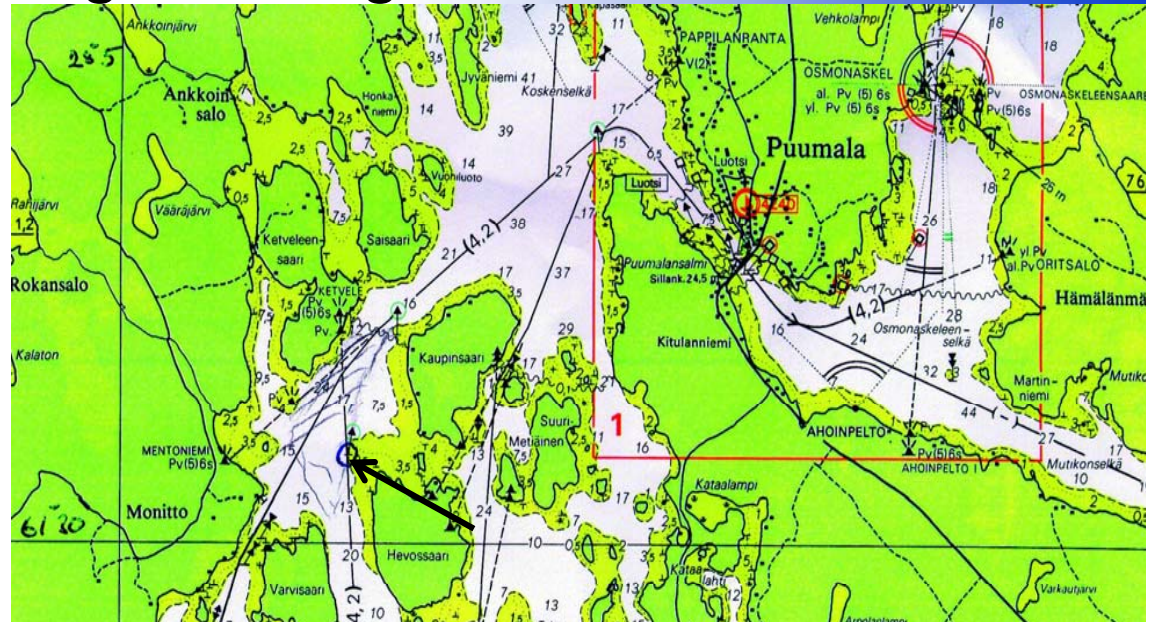
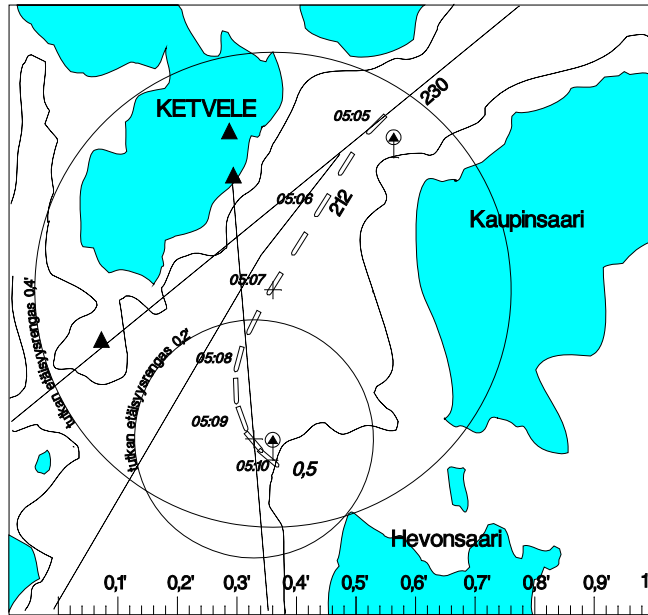
Lake views





Vessels and accidents

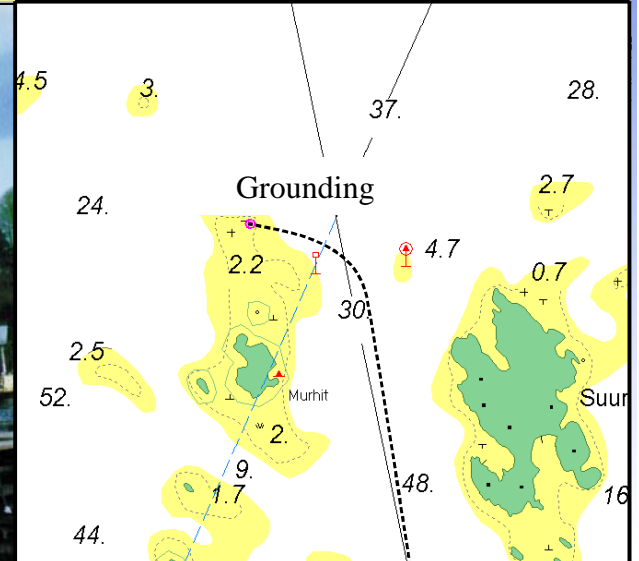
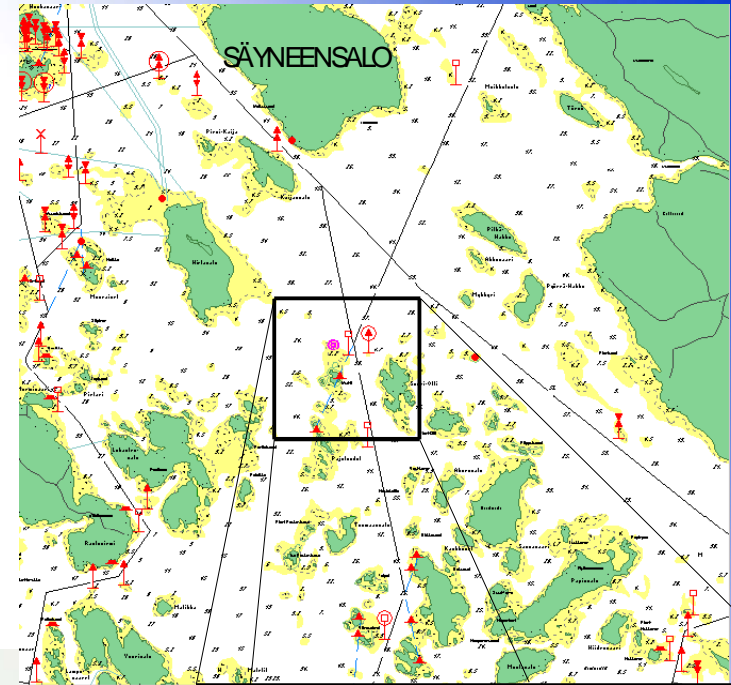
ms MARJESCO, grounding 11.04.1997





Vessels and accidents

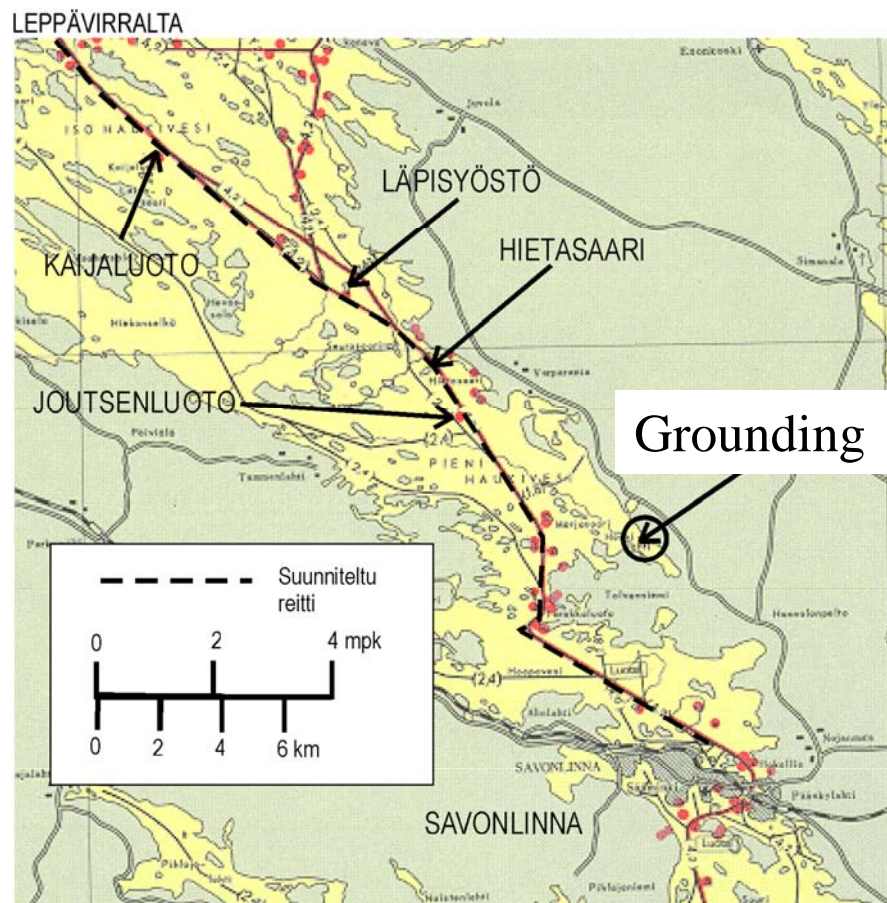
ms UKKO, grounding
23.5.1997





Vessels and accidents

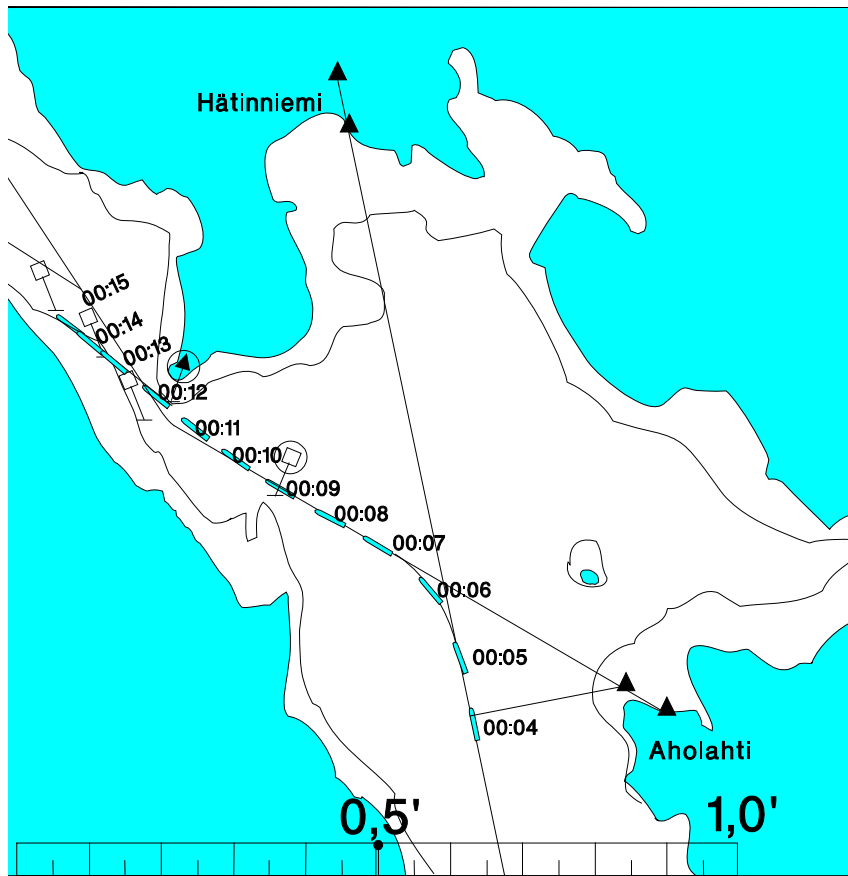
ss LEPPÄVIRTA, grounding 8.7.1997





Vessels and accidents

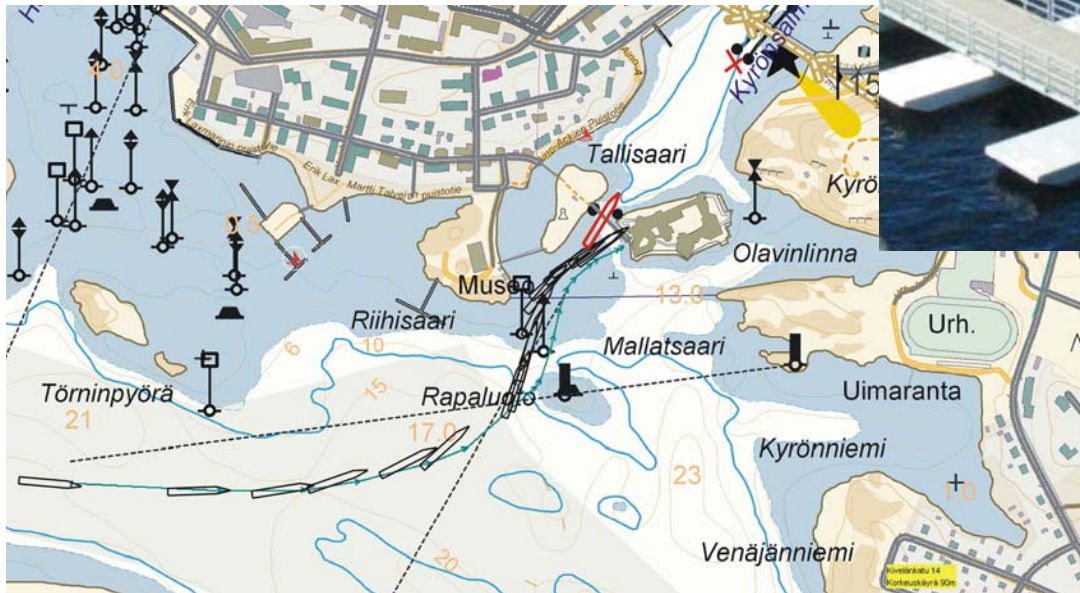
ms BALTIC MERCHANT, grounding 21.04.1998





Vessels and accidents

MS KRASNOVIDOVO, grounding 18.7.2004



ONNETTOMUUSTUTKINTAKESKUS – CENTRALEN FÖR UNDERSÖKNING AV OLYCKOR – ACCIDENT INVESTIGATION BOARD FINLAND

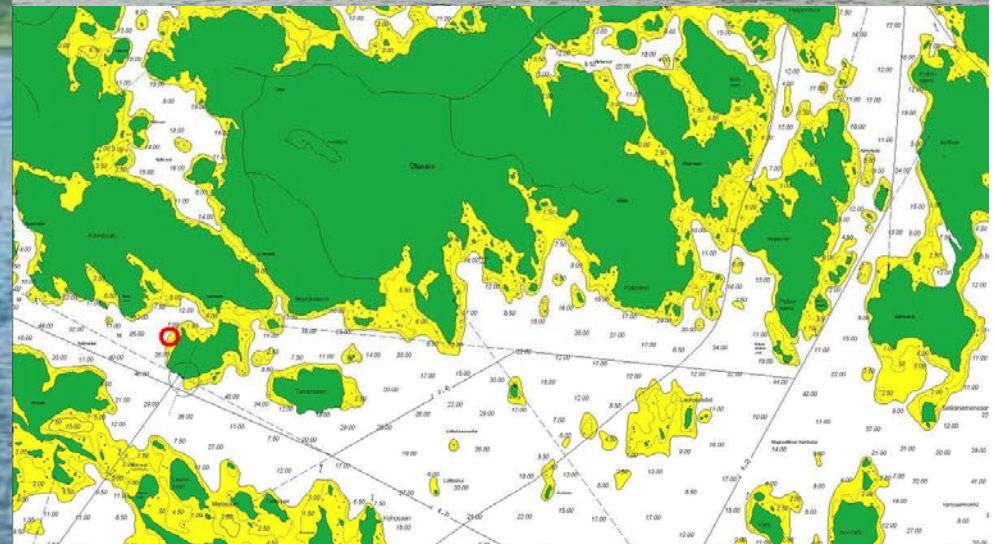
31.3.2009

10



Vessels and accidents

S/S HEIKKI PEURANEN, grounding 25.6.2005





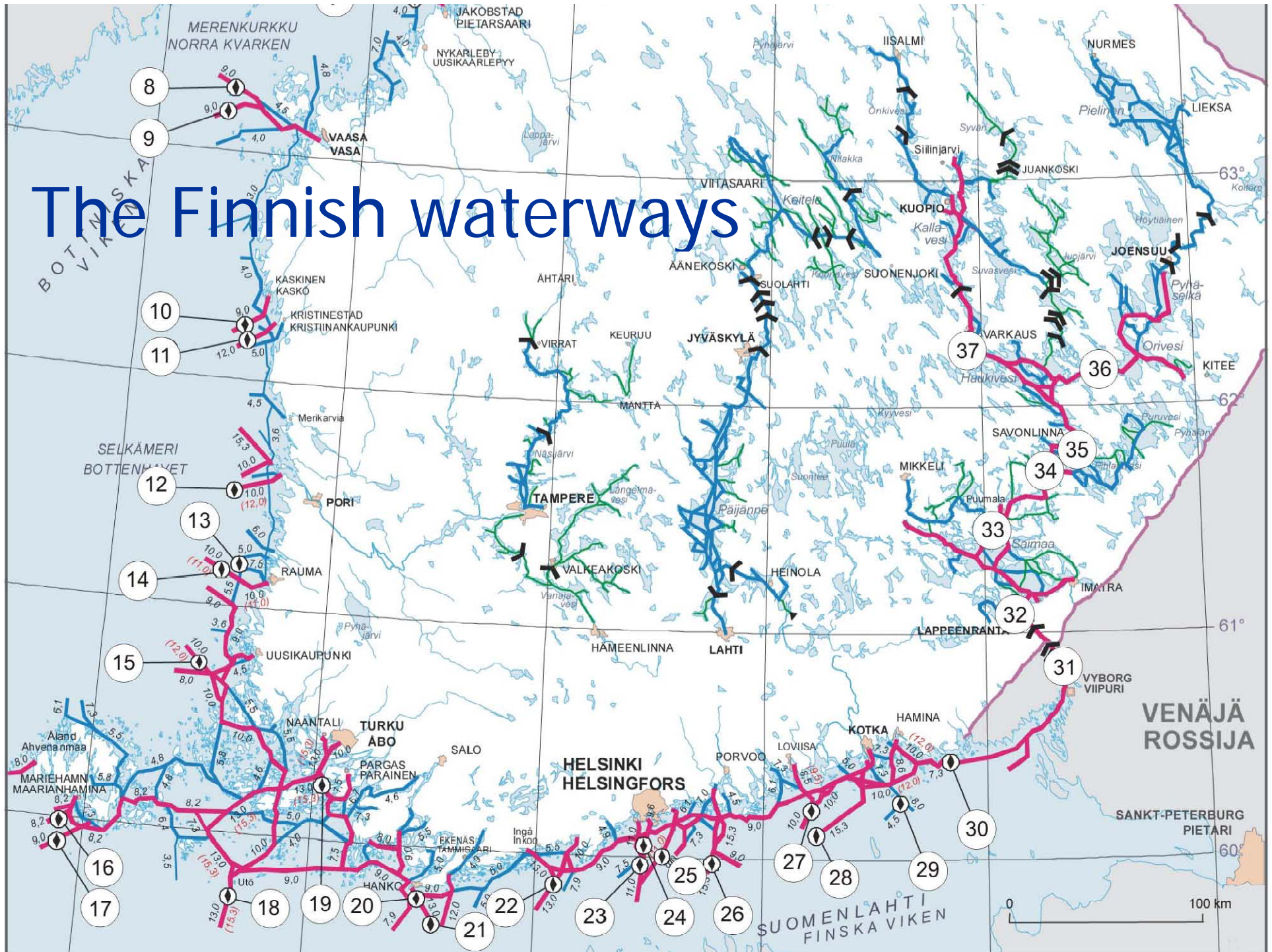
Comparison between inland waterways and sea

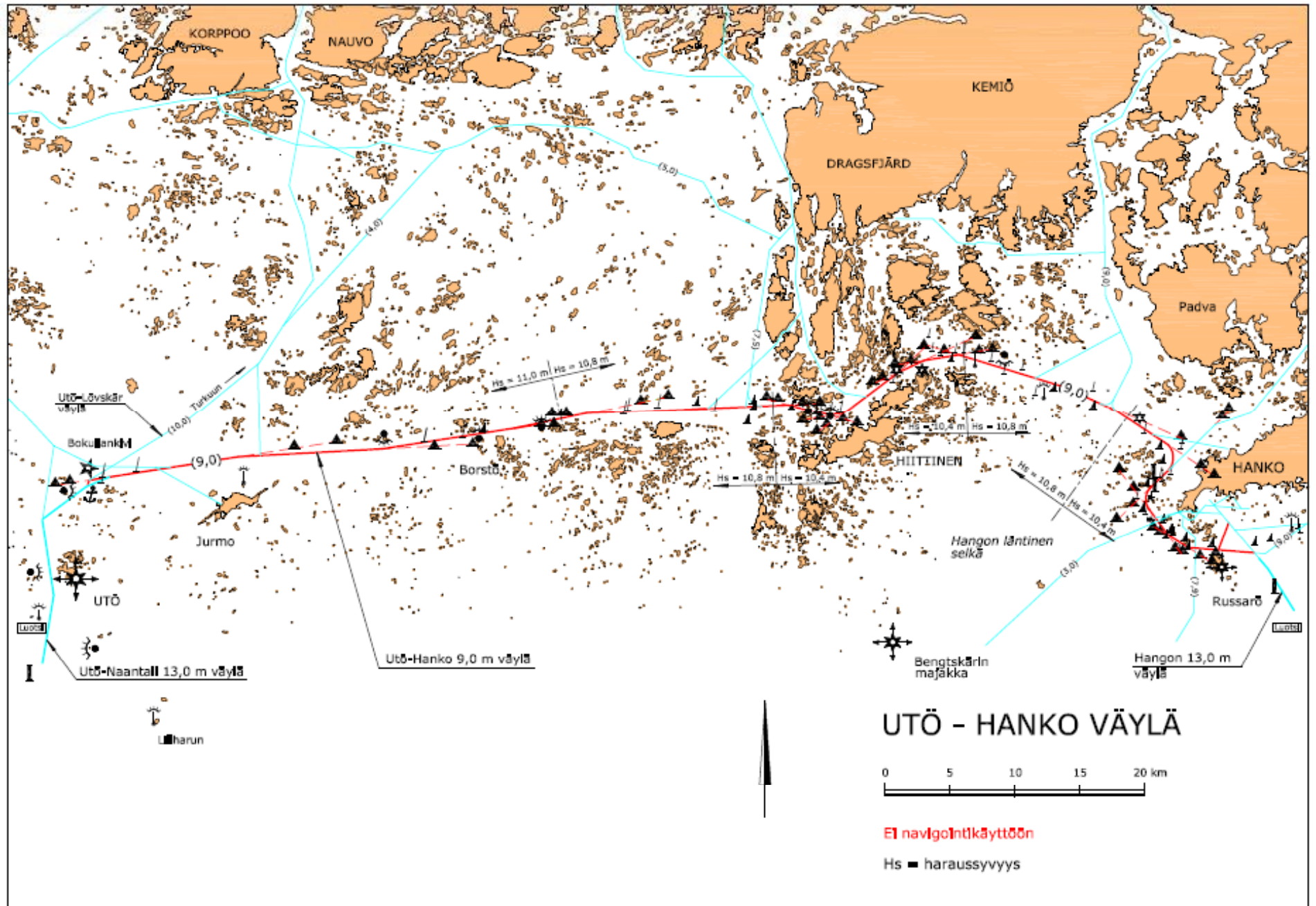
In Finland we have international traffic in inland waterways with seagoing vessels.

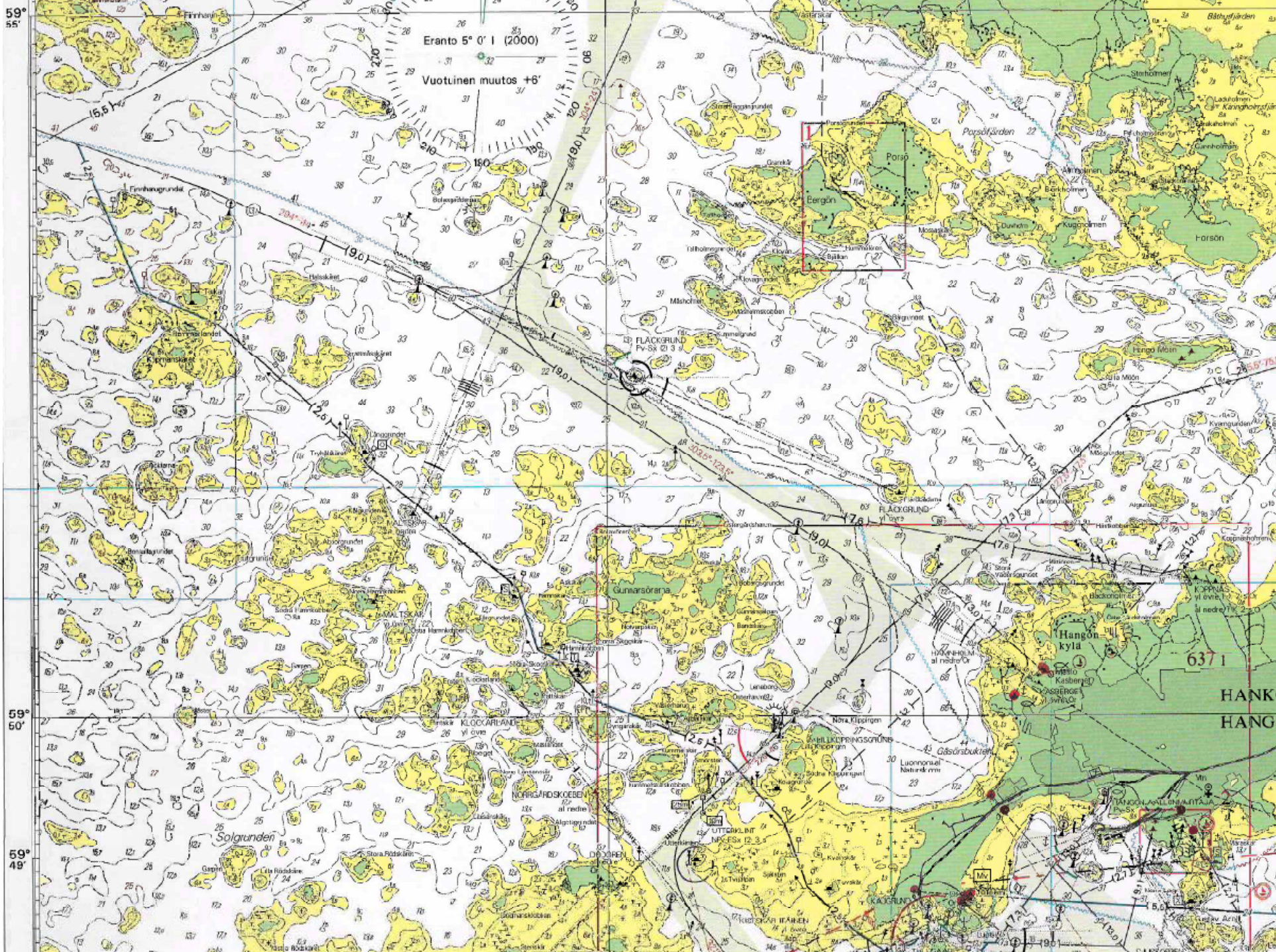
Also in the coastal area the archipelago fairways resemble geographically the inland waterways.

AIBF investigates all inland waterway accidents which involve merchant ships in commercial traffic.

The Finnish waterways







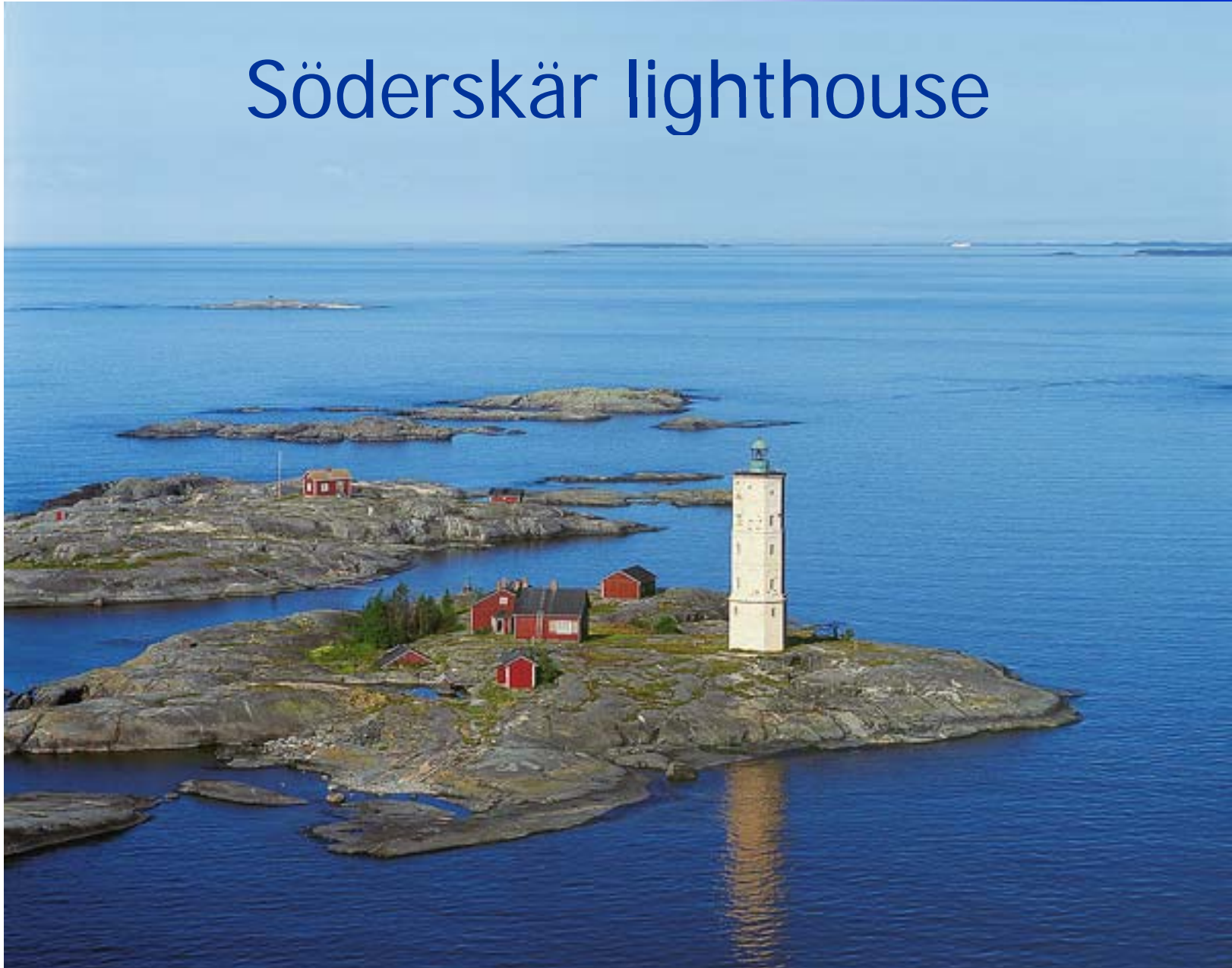


Archipelago views





Söderskär lighthouse





**Thank you
for
your attention**

www.onnettomuustutkinta.fi

