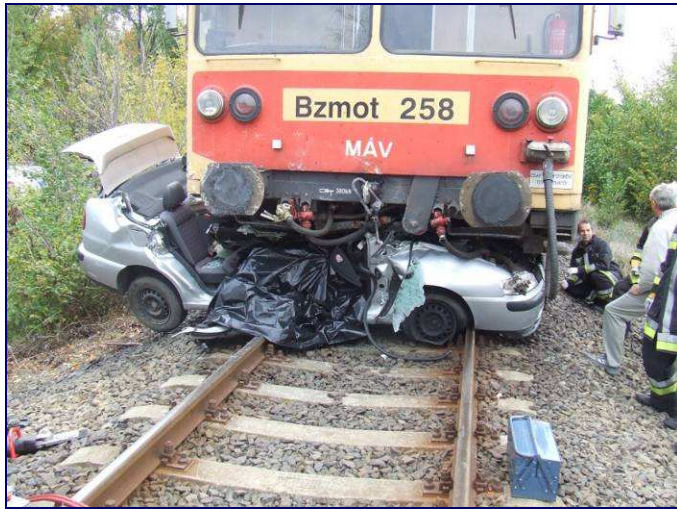


The full, official version of the final report is only available in Hungarian language

2007-371



A passenger train collided with a car at a level crossing (with no barriers) between Mártély and Mindszent stations. As a consequence, the driver and one passenger of the car died at the site of the accident.

In the course of the site survey, the IC established that the so called “reduced visibility triangle” was assured. The speed limit for the road at the LC was 40 km/h. The car was driving on the road parallel with the rail track, in opposite direction with the train. Upon approaching the LC, the engine-driver gave out a “Warning!” signal. Having noticed that the car wouldn’t be able to stop before the LC, he applied emergency brake but could not avoid the collision.